

# Cluster Control

## 1. What is it?

ClusterControl is a database management tool used to deploy, monitor and scale database clusters. The easy to use web graphical interface to manage, monitor and auto-scale clustered databases supports MySQL Replication, MySQL Cluster and Galera Cluster.

The main features are:

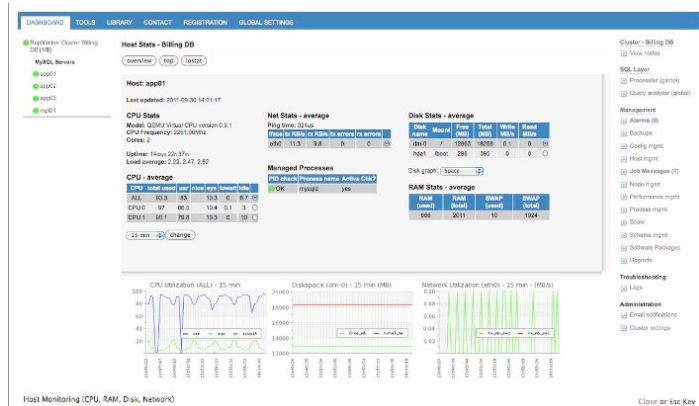
- Configuration wizard used to easily configure the cluster without prior knowledge of all the parameters or dependencies involved
- Automated deployment
- Simple and easy to use web interface
- Single, consolidated view of the whole cluster and underlying OS/HW resources
- SQL benchmarking
- Granular end-to-end transactions and database operations monitoring
- Availability manager (for automatic node fail-over and recovery, rolling restarts, cluster recovery)
- Configuration management
- Backup scheduler
- Automated online rolling upgrades of database software
- Add/drop nodes from cluster

ClusterControl for Galera is supported by MariaDB. ClusterControl for MySQL Cluster is supported by MariaDB in conjunction with SeveralNines.



## 2. How does it work?

The core components consist of a controller and one or more agents that are installed on the managed nodes. Each agent reports monitoring data to the controller, which stores the data in a local database.



ClusterControl supports multiple clustering topologies using MySQL Replication, MySQL Cluster and Galera Cluster.

## 3. When to use it?

- If you need a central interface to operate one or multiple clusters
- To manage whole clusters instead of individual DB nodes
- To automate operations like performance checks, node health checks and online cluster backups
- To automate management tasks like cluster-wide configuration changes, rolling restarts, online DB software upgrades, add/remove nodes

## 4. Resources

- ClusterControl for MySQL Cluster: [www.severalnines.com/cluster-control-mysql-cluster](http://www.severalnines.com/cluster-control-mysql-cluster)
- ClusterControl for Galera Cluster: [www.severalnines.com/clustercontrol-mysql-galera](http://www.severalnines.com/clustercontrol-mysql-galera)
- Tutorial: Galera Cluster: [www.severalnines.com/clustercontrol-mysql-galera-tutorial](http://www.severalnines.com/clustercontrol-mysql-galera-tutorial)
- Training slides: MySQL Cluster [www.severalnines.com/mysql-cluster-training](http://www.severalnines.com/mysql-cluster-training)
- Customer References: [www.severalnines.com/references](http://www.severalnines.com/references)